



Target Monitoring and Performance Report

Suffolk CSP

March 2009

Details of individual CSP projects are available on-line at www.thefundingproject.com

SUFFOLK LAA **TARGET MONITORING** – Safer Stronger Communities targets

Target description (NI reference)	Baseline (year)	Target details	Qtr 1 Apr-Jun 08-09	Qtr 2 July-Sept 08-09	6 months Apr-Sept 08-09	Qtr 3 Oct-Dec 08-09	9 months Apr-Dec 08-09	Qtr 4 Jan-Mar 08-09	Full year Apr-Mar 08-09
Re-offending rate of prolific and priority offenders (NI 30)	651 (2007/08)	-18%	<i>Qtrly target 133</i> <i>101 offences</i> <i>32 ↓ target</i>	<i>Qtrly target 133</i> <i>48 offences</i> <i>85 ↓ target</i>	<i>6mth target 266</i> <i>149 offences</i> <i>117 ↓ target</i>	<i>Qtrly target 133</i> <i>XXXX offences</i> <i>XXX ↓ target</i>	<i>9mth target 399</i> <i>XXXX offences</i> <i>XXX ↓ target</i>	<i>Qtrly target 133</i> <i>XXXX offences</i> <i>XXX ↓ target</i>	<i>Yr target 532</i> <i>XXX offences</i> <i>XXX ↓ target</i>
Repeat incidents of domestic violence (NI 32)	31% (National baseline)	-28% (2010/11)	Performance information currently not available						
Progressively increase the number of older people reporting that they feel their home is a safe environment (LT6)	TBC	TBC	Performance information currently not available						
Number of serious violent crimes committed in a public place where alcohol and substance misuse was a factor (LT7)	1352 (2008/09)	1284 (2008/09) 1270 (2009/10) 1256 (2010/11)	<i>Qtrly target 321</i> <i>326 offences</i> <i>5 ↑ target</i>	<i>Qtrly target 321</i> <i>388 offences</i> <i>67 ↑ target</i>	<i>6mth target 642</i> <i>714 offences</i> <i>72 ↑ target</i>	<i>Qtrly target 321</i> <i>345 offences</i> <i>24 ↑ target</i>	<i>9mth target 963</i> <i>1059 offences</i> <i>96 ↑ target</i>	<i>Qtrly target 321</i> <i>336 offences</i> <i>15 ↑ target</i>	<i>Yr target 1284</i> <i>1395 offences</i> <i>111 ↑ target</i>

SUFFOLK LAA **TARGET MONITORING** – Other selected targets

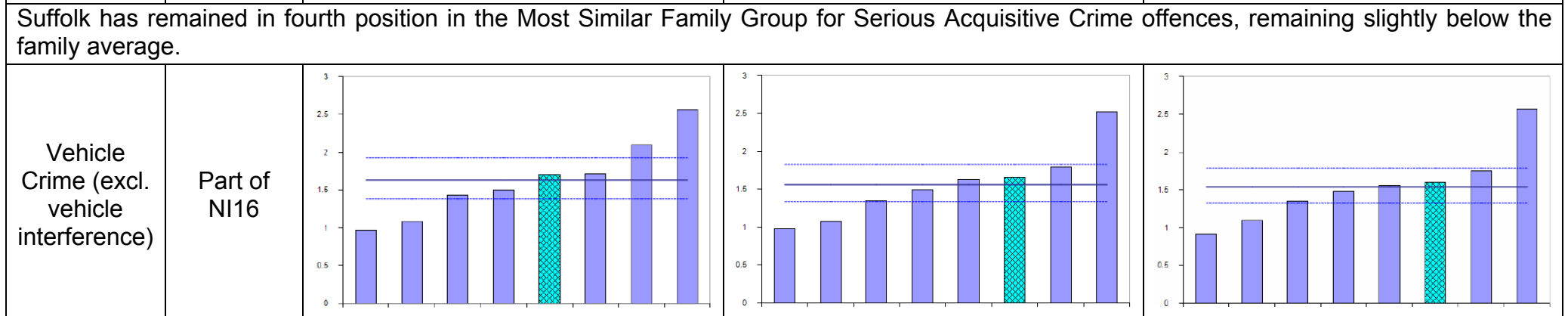
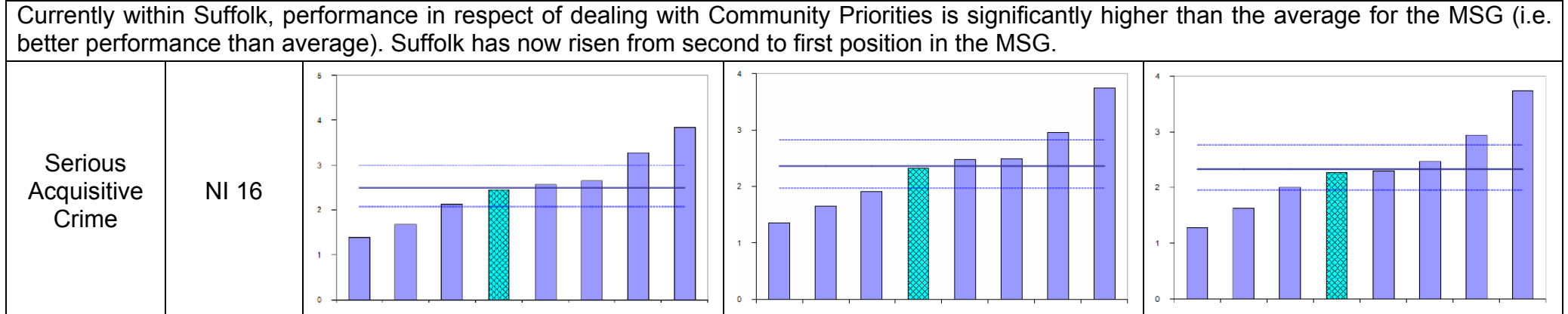
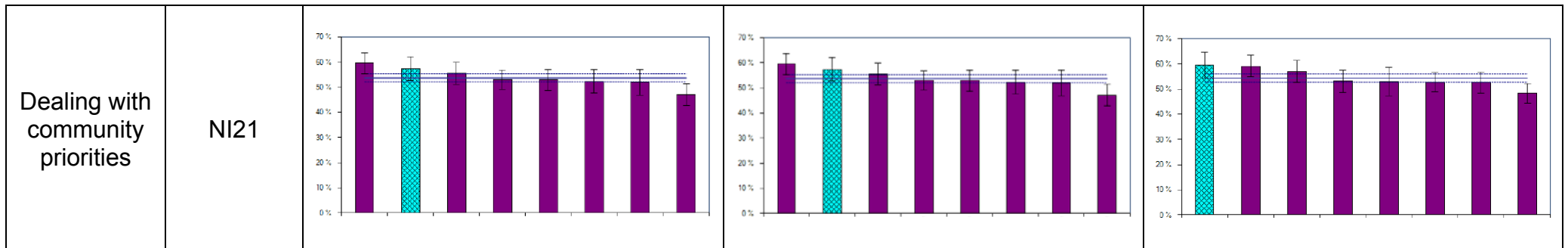
Target description (NI reference)	Baseline (year)	Target details	Qtr 1 Apr-Jun 08-09	Qtr 2 July-Sept 08-09	6 months Apr-Sept 08-09	Qtr 3 Oct-Dec 08-09	9 months Apr-Dec 08-09	Qtr 4 Jan-Mar 08-09	Full year Apr-Mar 08-09
Rate of proven re-offending by young offenders (NI 19)	173 (2005)	168	Full performance information is currently unavailable. However, based on partial data the rate of proven re-offending by young offenders is improving .						
First time entrants to the Youth Justice System aged 10 – 17 (NI 111)	1800 (-)	Target setting deferred nationally	Full performance information is currently unavailable. However, based on partial data the number of first time entrants to the Youth Justice System is improving .						
Young people's participation in positive activities (NI 110)	71.4% (2007/08)	Target setting deferred nationally	Full performance information is currently unavailable. However, based on partial data the number of young people (aged 13-19) participating in positive activities is in-line with the national average.						

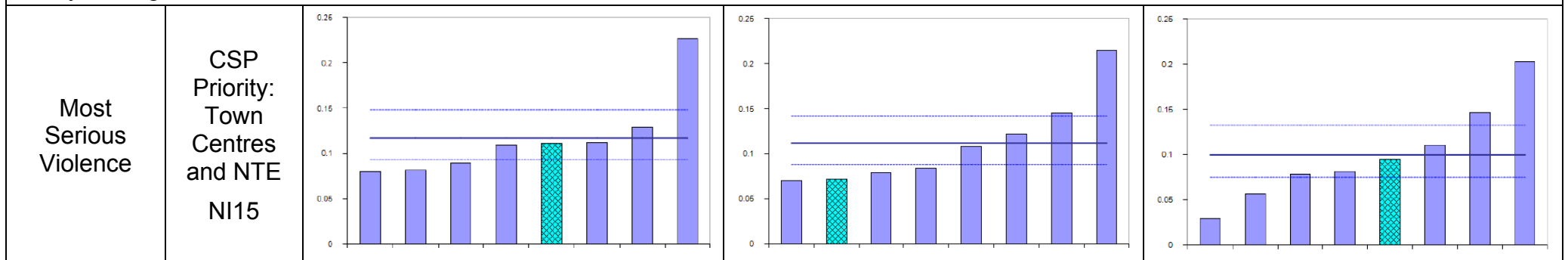
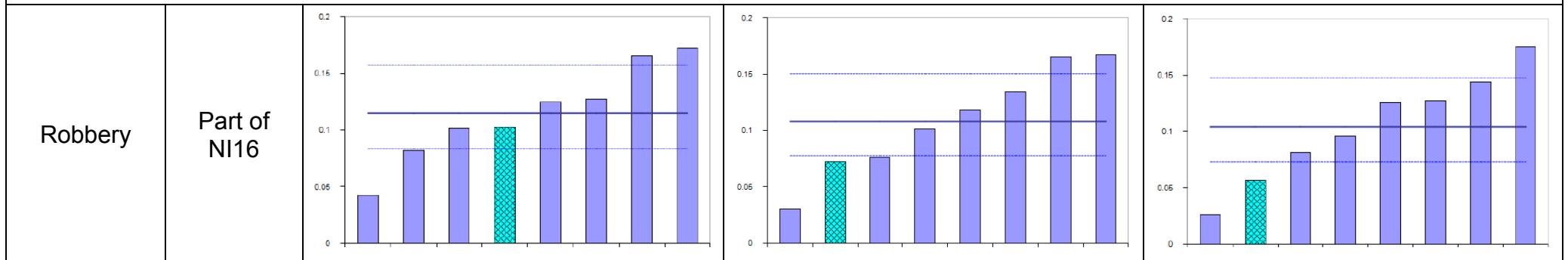
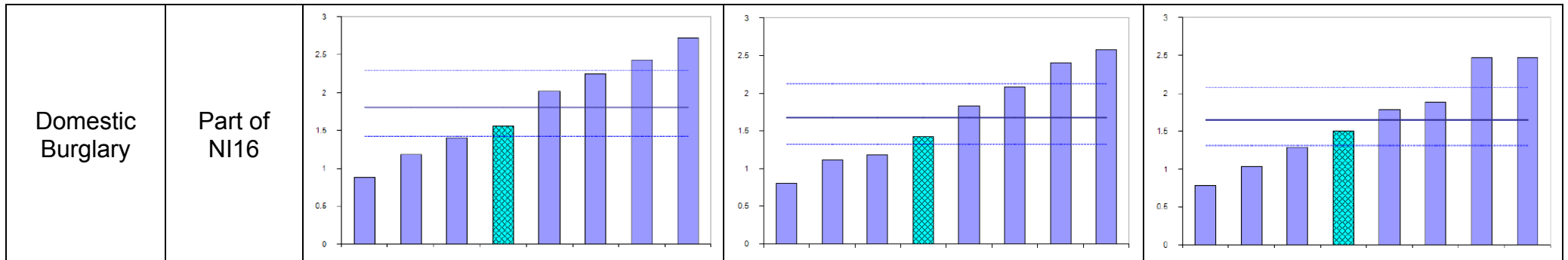
Suffolk – KEY AREAS OF CONCERN

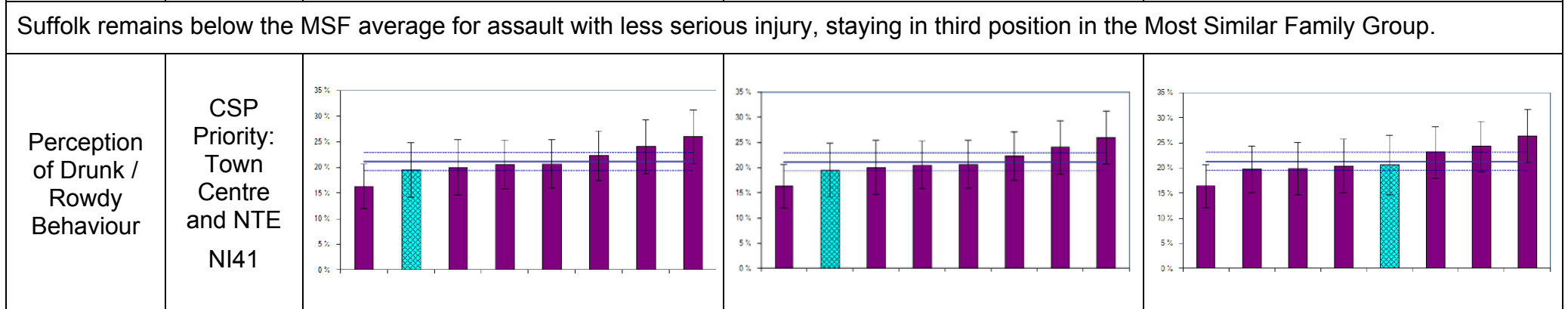
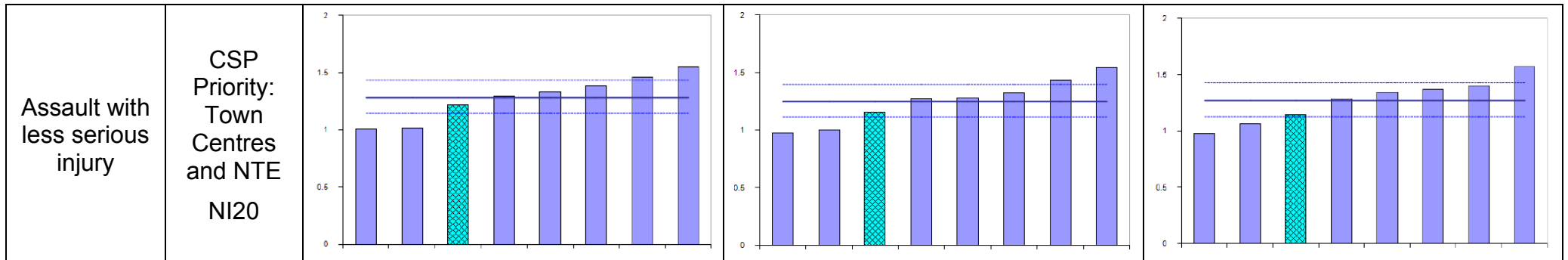
Crime Type	% of overall crime	Recent Trend	Details
Criminal Damage	24%	Improvement in the Most Similar Family Group position	Suffolk has fallen from sixth to fifth place in the Most Similar Family Group and also remains slightly above the family average for Criminal Damage. Criminal Damage also remains the highest contributor to overall crime in Suffolk. Criminal Damage remains the most prevalent recorded crime in Suffolk and in all districts with the exception of Forest Heath where it is second to Violence Against The Person offences.
Violence Against The Person	21%	Deterioration in the Most Similar Family Group position	Violence against the person offences is the second highest contributor to overall crime in Suffolk. Suffolk has risen to fifth position in the Most Similar Family Group for Most Serious Violence, but remains below the family average. Violent crime remains the second most prevalent crime in Suffolk across all districts with the exception of Forest Heath where it is the most prevalent.

CSP PERFORMANCE MANAGEMENT – Most Similar Family Group Comparisons

Indicator	National Indicator / CSP Priority	Most Similar Family Group Charting		
		January 2009	February 2009	March 2009
Criminal Damage (inc Arson)	CSP Priority: ASB – With a focus on young people			
Suffolk has fallen from sixth to fifth place in the Most Similar Family Group but still remains slightly above the family average for Criminal Damage.				
Perception of ASB	CSP Priority: ASB – With a focus on young people NI17			
Levels of perception of ASB within Suffolk are amongst the lowest nationally, with Suffolk remaining in second lowest position in the MSG.				








Suffolk overview

The chart below details the number of crimes for each offence type over a month, three month and twelve month period. Where a figure is highlighted in red it signifies an increase in comparison to the same period the previous year. The percentage that each offence type contributes to overall crime in the last 12 months is also displayed. The PARETO chart shows the number of crimes per offence and the cumulative percentage. Further detailed information on crime levels in Suffolk is available at www.suffolk.gov.uk/crimestatistics.

Overview Chart		12 months ending March		3 months ending March		Month ending March		% of overall crime last 12 months
		2007/08	2008/09	2007/08	2008/09	2007/08	2008/09	
Offence Type	Criminal Damage	11163	10672	2594	2623	783	961	24
	Violence Against The Person	9430	9186	1965	2165	600	766	21
	Other Thefts And Handlings	6681	6136	1420	1403	486	508	14
	Theft From Motor Vehicle	3497	3422	877	916	323	284	8
	Theft From Shops	2963	3136	721	843	245	315	7
	Burglary Other Building	3091	2875	729	792	200	266	7
	Other Drug Offences	1525	1814	325	423	100	154	4
	Theft Of A Pedal Cycle	1611	1680	271	322	80	120	4
	Burglary Dwelling	1766	1647	414	455	101	157	4
	Fraud And Forgery	1137	994	292	207	88	70	2
	Theft Of Motor Vehicle	1213	975	235	221	59	54	2
	Sexual Offences	546	456	103	107	41	44	1
	Arson	542	398	142	81	44	31	1
	Serious Drug Offences	360	338	77	39	15	7	1
	Robbery	262	289	64	49	22	18	1

PARETO Chart 12 Months ending Mar 09		
Offence Type	Count	Cuml %
Criminal Damage	10672	24
Violence Against The Person	9186	45
Other Thefts And Handlings	6136	59
Theft From Motor Vehicle	3422	67
Theft From Shops	3136	74
Burglary Other Building	2875	80
Other Drug Offences	1814	85
Theft Of A Pedal Cycle	1680	88
Burglary Dwelling	1647	92
Fraud And Forgery	994	94
Theft Of Motor Vehicle	975	97
Sexual Offences	456	98
Arson	398	99
Serious Drug Offences	338	99
Robbery	289	100

	Increase against historical figure
---	------------------------------------

National Indicator (NI) Set - Community Safety Partnership related indicators

NI's detailed in **bold** are included in this report – all others are considered for reporting by exception. Data is available on request if required.

<u>NI</u>	<u>APACS SPI</u>	<u>PSA</u>	<u>Description</u>
NI 15:	5.1	23	Serious violent crime rate
NI 16:	5.2	23	Serious acquisitive crime rate
NI 17:	4.1	23	Perceptions of anti-social behaviour
NI 18:	11.1	23	Adult re-offending rates for those under probation supervision
NI 19:	11.2	23	Rate of proven re-offending by young offenders
NI 20:	5.3	25	Assault with injury crime rate
NI 21:	2.2	23	Dealing with local concerns about anti-social behaviour and crime by the local council and police
NI 22:			Perceptions of parents taking responsibility for the behaviour of their children in the area
NI 24:			Satisfaction with the way the police and local council dealt with anti-social behaviour
NI 25:			Satisfaction of different groups with the way the police and local council dealt with anti-social behaviour
NI 26:		23	Specialist support to victims of a serious sexual offence
NI 27:	2.1		Understanding of local concerns about anti-social behaviour and crime by the local council and police
NI 28:	5.6	23	Serious knife crime rate
NI 29:	5.5	23	Gun crime rate
NI 30:	10.1		Re-offending rate of prolific and priority offenders
NI 31:			Re-offending rate of registered sex offenders
NI 32:		23	Repeat incidents of domestic violence
NI 33:	7.1		Arson incidents
NI 34:	5.4	23	Domestic violence – murder
NI 35:		26	Building resilience to violent extremism
NI 36:		26	Protection against terrorist attack
NI 37:			Awareness of civil protection arrangements in the local area
NI 38:		25	Drug-related (Class A) offending rate
NI 39:		25	Alcohol-harm related hospital admission rates
NI 40:		25	Drug users in effective treatment
NI 41:	4.2	25	Perceptions of drunk or rowdy behaviour as a problem
NI 42:	4.3	25	Perceptions of drug use or drug dealing as a problem
NI 47:	9.1		People killed or seriously injured in road traffic accidents
NI 48:			Children killed or seriously injured in road traffic accidents
NI 49:			Number of primary fires and related fatalities and non-fatal casualties, excluding precautionary checks
NI 111:	11.3	14	First time youth offending rate
NI 143		16	Offenders under probation supervision living in settled and suitable accommodation at the end of their order or licence
NI 144		16	Offenders under probation supervision in employment at the end of their order or licence