



Target Monitoring and Performance Report

Suffolk CSP

December 2008

Details of individual CSP projects are available on-line at www.thefundingproject.com

Detailed performance information is available on-line at www.suffolk.gov.uk/crimestatistics

SUFFOLK LAA **TARGET MONITORING** – Safer Stronger Communities Targets

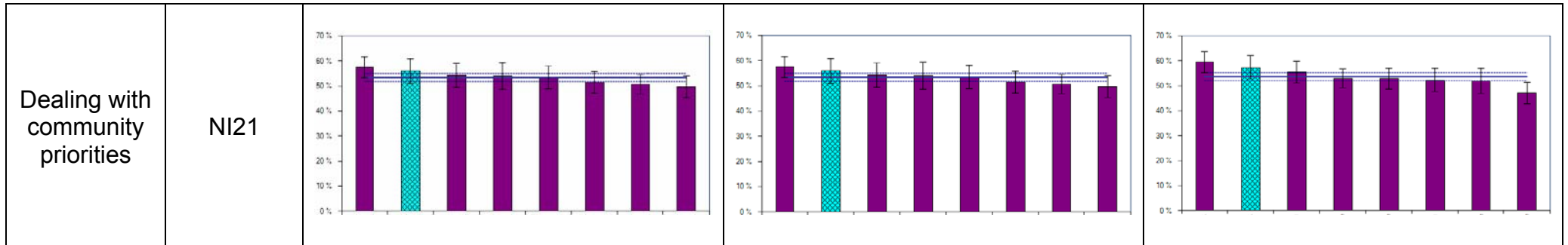
Target description (NI reference)	Baseline (year)	Target details	Qtr 1 Apr-Jun 08-09	Qtr 2 July-Sept 08-09	6 months Apr-Sept 08-09	Qtr 3 Oct-Dec 08-09	9 months Apr-Dec 08-09	Qtr 4 Jan-Mar 08-09	Full year Apr-Mar 08-09
Re-offending rate of prolific and priority offenders (NI 30)	651 (2007/08)	-18%	Qtrly target 133 101 offences 32 ↓ target	Performance information currently not available					
Rate of proven re-offending by young offenders (NI 19)	TBC	Target setting deferred nationally	Performance information currently not available						
First time entrants to the Youth Justice System aged 10 – 17 (NI 111)	TBC	TBC	Performance information currently not available						
Repeat incidents of domestic violence (NI 32)	TBC	Target setting deferred nationally	Performance information currently not available						
Older people feel safe within their own homes and so are able to remain living independently for longer	TBC	TBC	Performance information currently not available						
Number of serious violent crimes committed in a public place where alcohol and substance misuse was a factor	1352 (-)	1284 (2008/09) 1270 (2009/10) 1256 (2010/11)	Qtrly target 321 326 offences 5 ↑ target	Qtrly target 321 388 offences 67 ↑ target	6mth target 642 714 offences 72 ↑ target	Qtrly target 321 345 offences 24 ↑ target	9mth target 963 1059 offences 96 ↑ target	Qtrly target 321 XXXX offences XXX ↓ target	Yr target 1284 XXX offences XXX ↓ target
Alcohol (deferred)	-	-	Performance information currently not available						
Young people's participation in positive activities (NI 110)	TBC	Target setting deferred nationally	Performance information currently not available						

Suffolk – KEY AREAS OF CONCERN

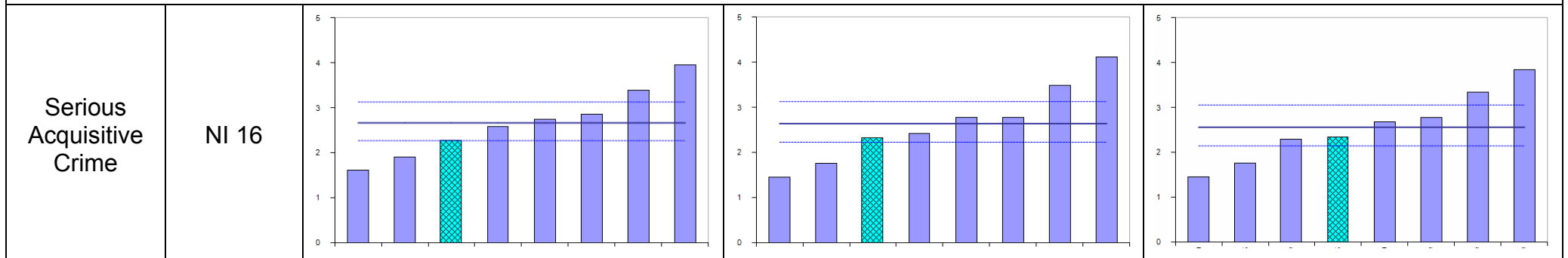
Crime Type	% of overall crime	Recent Trend	Details
Criminal Damage	24%	No change in the Most Similar Family Group position	Suffolk remains in sixth position in the Most Similar Family Group with a crime rate that is slightly above the family average. Criminal Damage also remains the highest contributor to overall crime levels at 24% of all recorded crime in Suffolk. Within each CSP offences are concentrated in specific areas, predominantly within the main towns.
Violence Crime	21%	Improvement in the Most Similar Family Group position	At 21% violence against the person offences are the second highest contributor to overall crime in Suffolk. Suffolk remains in sixth position in the Most Similar Family Group and it should continue to be considered an area that will continue to require action. Within each CSP offences are concentrated in specific areas, predominantly within the main towns with strong links to the nighttime economy.

CSP PERFORMANCE MANAGEMENT – Most Similar Family Group Comparisons

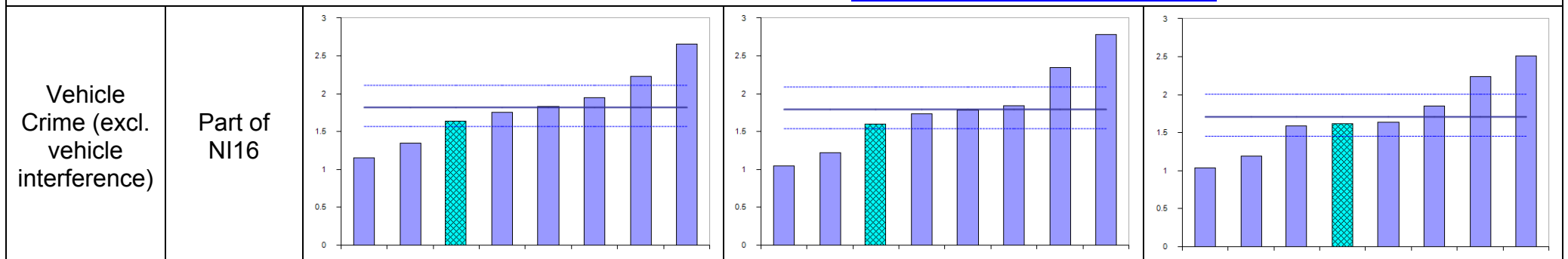
Indicator	National Indicator / CSP Priority	Most Similar Family Group Charting		
		October 2008	November 2008	December 2008
Criminal Damage (inc Arson)	CSP Priority: ASB – With a focus on young people			
<p>Suffolk remains in sixth place in the Most Similar Family Group and also remains slightly above the family average for Criminal Damage. Further detailed information on crime levels in Suffolk is available at www.suffolk.gov.uk/crimestatistics</p>				
Perception of ASB	CSP Priority: ASB – With a focus on young people NI17			
<p>Levels of perception of ASB within Suffolk are amongst the lowest nationally however Suffolk remains in second lowest position in the MSG. Further detailed information on crime levels in Suffolk is available at www.suffolk.gov.uk/crimestatistics</p>				



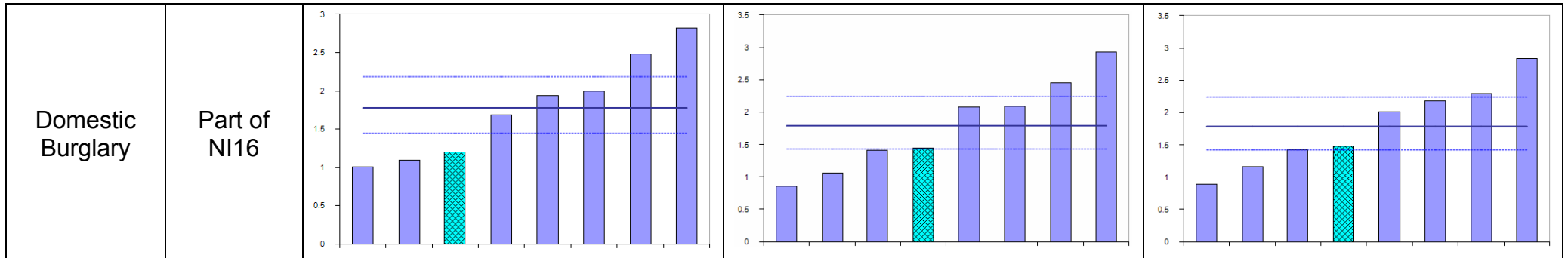
Currently within Suffolk, performance in respect of dealing with Community Priorities is higher than average for the MSG (i.e. better performance than average). Suffolk remains in second position in the MSG. Further detailed information on crime levels in Suffolk is available at www.suffolk.gov.uk/crimestatistics



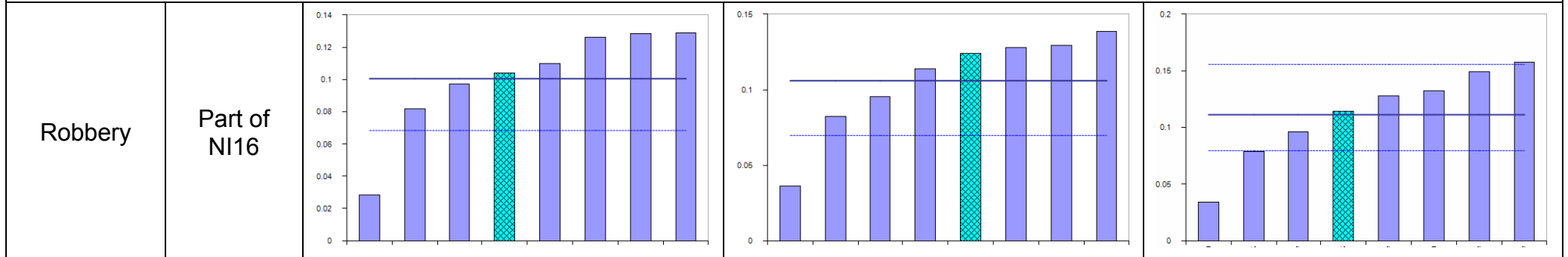
Suffolk has risen from third to fourth position in the Most Similar Family Group and is still below the family average for Serious Acquisitive Crime offences. Further detailed information on crime levels in Suffolk is available at www.suffolk.gov.uk/crimestatistics



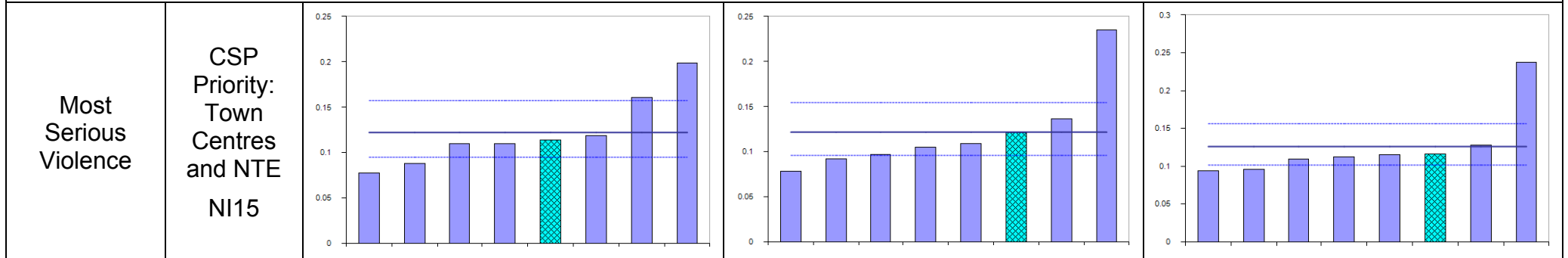
Suffolk has risen from third to fourth position in the MSF for vehicle crime, with a crime rate below average. Further detailed information on crime levels in Suffolk is available at www.suffolk.gov.uk/crimestatistics



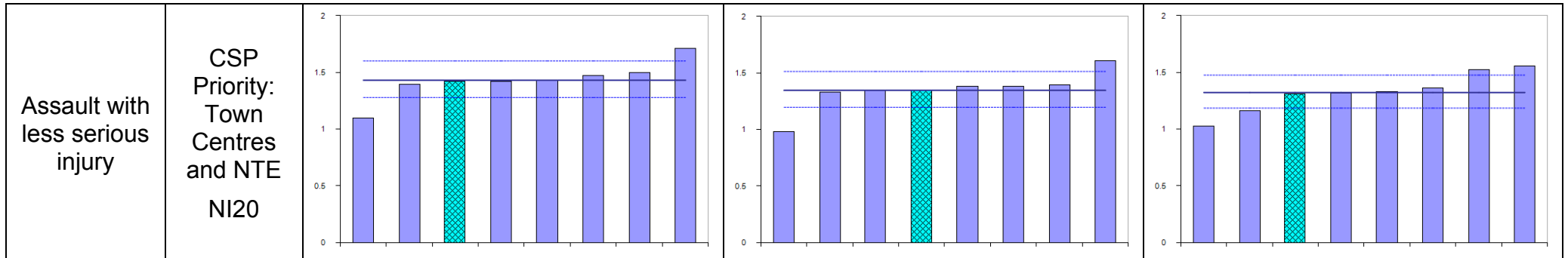
Suffolk remains in fourth position in the MSF with a domestic burglary rate below the family average. Further detailed information on crime levels in Suffolk is available at www.suffolk.gov.uk/crimestatistics



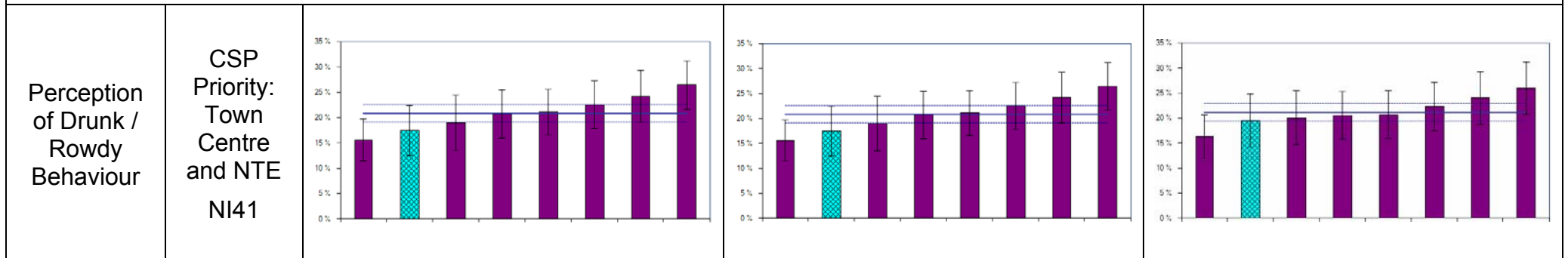
Suffolk has fallen from fifth to fourth position in the Most Similar Family Group for robbery with a crime rate slightly above the family average. Further detailed information on crime levels in Suffolk is available at www.suffolk.gov.uk/crimestatistics



Suffolk remains in sixth position in the Most Similar Family Group for Most Serious Violence and is below the family average. Further detailed information on crime levels in Suffolk is available at www.suffolk.gov.uk/crimestatistics



Suffolk remains just below the MSF average for assault with less serious injury and the county has fallen from fourth to third position in the Most Similar Family Group. Further detailed information on crime levels in Suffolk is available at www.suffolk.gov.uk/crimestatistics



Suffolk is amongst the best performing counties in the MSF in respect of perception of Drunk/Rowdy Behaviour as a local problem. Further detailed information on crime levels in Suffolk is available at www.suffolk.gov.uk/crimestatistics


Suffolk overview

The chart below details the number of crimes for each offence type over a month, three month and twelve month period. Where a figure is highlighted in red it signifies an increase in comparison to the same period the previous year. The percentage that each offence type contributes to overall crime in the last 12 months is also displayed. The PARETO chart shows the number of crimes per offence and the cumulative percentage. Further detailed information on crime levels in Suffolk is available at www.suffolk.gov.uk/crimestatistics.

Overview Chart		12 months ending December	
		2007/08	2008/09
Offence Type	Criminal Damage	11650	10643
	Violence Against The Person	9773	8986
	Other Thefts And Handlings	6940	6153
	Theft From Motor Vehicle	3704	3383
	Theft From Shops	2918	3014
	Burglary Other Building	3269	2812
	Other Drug Offences	1540	1716
	Theft Of A Pedal Cycle	1695	1629
	Burglary Dwelling	1762	1606
	Fraud And Forgery	1269	1079
	Theft Of Motor Vehicle	1325	989
	Arson	543	459
	Sexual Offences	548	452
	Serious Drug Offences	367	376
	Robbery	270	304

3 months ending December	
2007/08	2008/09
2697	2547
2752	2353
1784	1646
858	802
794	727
763	613
434	431
485	497
429	385
275	249
325	267
126	84
189	91
96	95
77	92

Month ending December		% of overall crime last 12 months
2007/08	2008/09	
936	917	24
865	744	21
516	455	14
285	295	8
210	296	7
227	225	6
147	129	4
128	105	4
200	139	4
93	40	2
82	65	2
42	27	1
33	29	1
39	31	1
17	20	1

 Increase against historical figure

PARETO Chart 12 Months ending Dec 08		
Offence Type	Count	Cuml %
Criminal Damage	10643	24
Violence Against The Person	8986	45
Other Thefts And Handlings	6153	59
Theft From Motor Vehicle	3383	67
Theft From Shops	3014	74
Burglary Other Building	2812	80
Other Drug Offences	1716	84
Theft Of A Pedal Cycle	1629	88
Burglary Dwelling	1606	92
Fraud And Forgery	1079	94
Theft Of Motor Vehicle	989	96
Arson	459	97
Sexual Offences	452	98
Serious Drug Offences	376	99
Robbery	304	100



National Indicator (NI) Set - Community Safety Partnership related indicators

NI's detailed in **bold** are included in this report – all others are considered for reporting by exception. Data is available on request if required.

<u>NI</u>	<u>APACS SPI</u>	<u>PSA</u>	<u>Description</u>
NI 15:	5.1	23	Serious violent crime rate
NI 16:	5.2	23	Serious acquisitive crime rate
NI 17:	4.1	23	Perceptions of anti-social behaviour
NI 18:	11.1	23	Adult re-offending rates for those under probation supervision
NI 19:	11.2	23	Rate of proven re-offending by young offenders
NI 20:	5.3	25	Assault with injury crime rate
NI 21:	2.2	23	Dealing with local concerns about anti-social behaviour and crime by the local council and police
NI 22:			Perceptions of parents taking responsibility for the behaviour of their children in the area
NI 24:			Satisfaction with the way the police and local council dealt with anti-social behaviour
NI 25:			Satisfaction of different groups with the way the police and local council dealt with anti-social behaviour
NI 26:		23	Specialist support to victims of a serious sexual offence
NI 27:	2.1		Understanding of local concerns about anti-social behaviour and crime by the local council and police
NI 28:	5.6	23	Serious knife crime rate
NI 29:	5.5	23	Gun crime rate
NI 30:	10.1		Re-offending rate of prolific and priority offenders
NI 31:			Re-offending rate of registered sex offenders
NI 32:		23	Repeat incidents of domestic violence
NI 33:	7.1		Arson incidents
NI 34:	5.4	23	Domestic violence – murder
NI 35:		26	Building resilience to violent extremism
NI 36:		26	Protection against terrorist attack
NI 37:			Awareness of civil protection arrangements in the local area
NI 38:		25	Drug-related (Class A) offending rate
NI 39:		25	Alcohol-harm related hospital admission rates
NI 40:		25	Drug users in effective treatment
NI 41:	4.2	25	Perceptions of drunk or rowdy behaviour as a problem
NI 42:	4.3	25	Perceptions of drug use or drug dealing as a problem
NI 47:	9.1		People killed or seriously injured in road traffic accidents
NI 48:			Children killed or seriously injured in road traffic accidents
NI 49:			Number of primary fires and related fatalities and non-fatal casualties, excluding precautionary checks
NI 111:	11.3	14	First time youth offending rate
NI 143		16	Offenders under probation supervision living in settled and suitable accommodation at the end of their order or licence
NI 144		16	Offenders under probation supervision in employment at the end of their order or licence